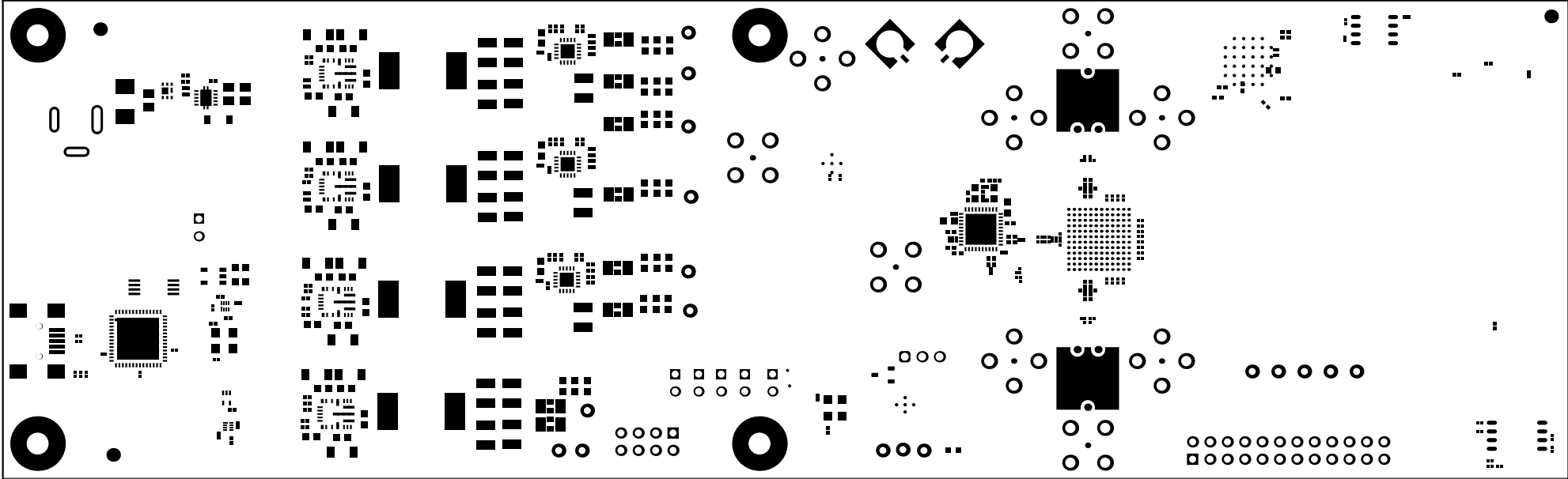
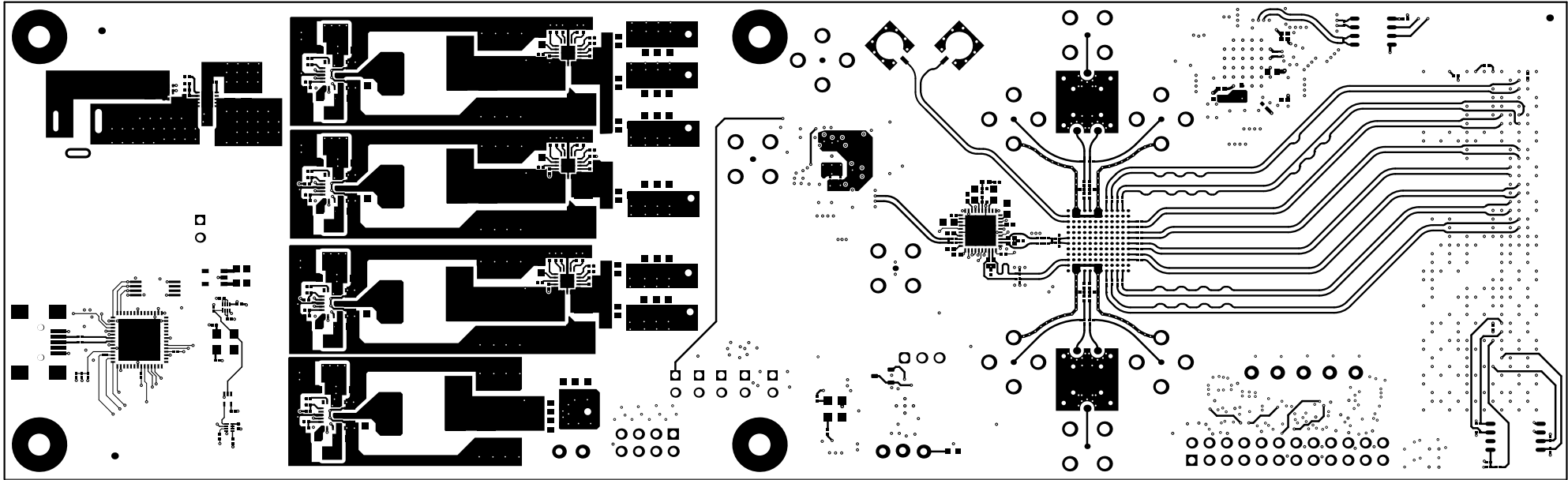


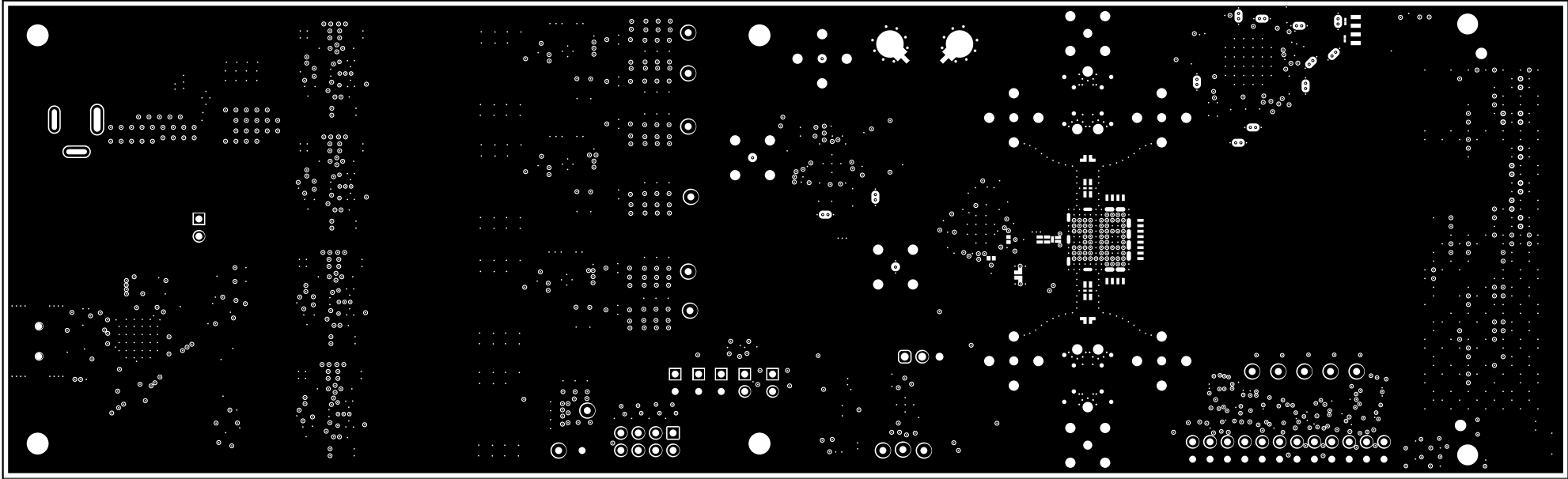
ALL ARTWORK VIEWED FROM TOP SIDE	BOARD #: DC061	REV: B	SUN REV: Not In VersionControl
LAYER NAME = Top SilkScreen			
PLOT NAME = Top Silkscreen	GENERATED : 6/11/2019 3:55:48 PM	TEXAS INSTRUMENTS	



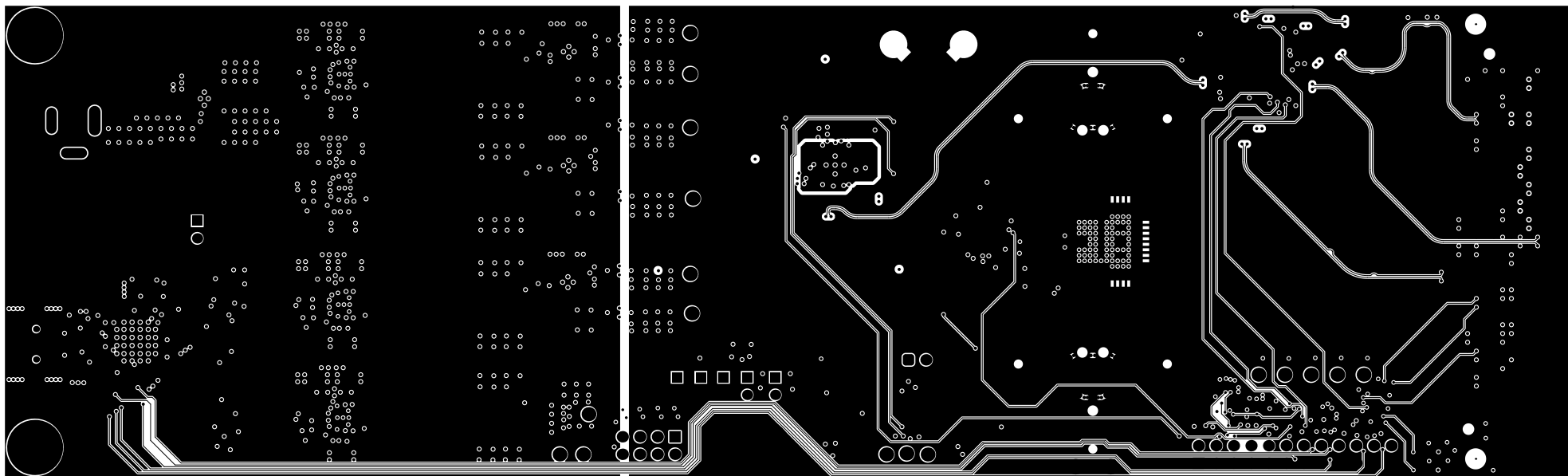
ALL ARTWORK VIEWED FROM TOP SIDE	BOARD #: DC061	REV: B	SUN REV: Not In VersionControl
LAYER NAME = Top Solder Mask			
PLOT NAME = Top SolderMask	GENERATED : 6/11/2019 3:55:48 PM	TEXAS INSTRUMENTS	

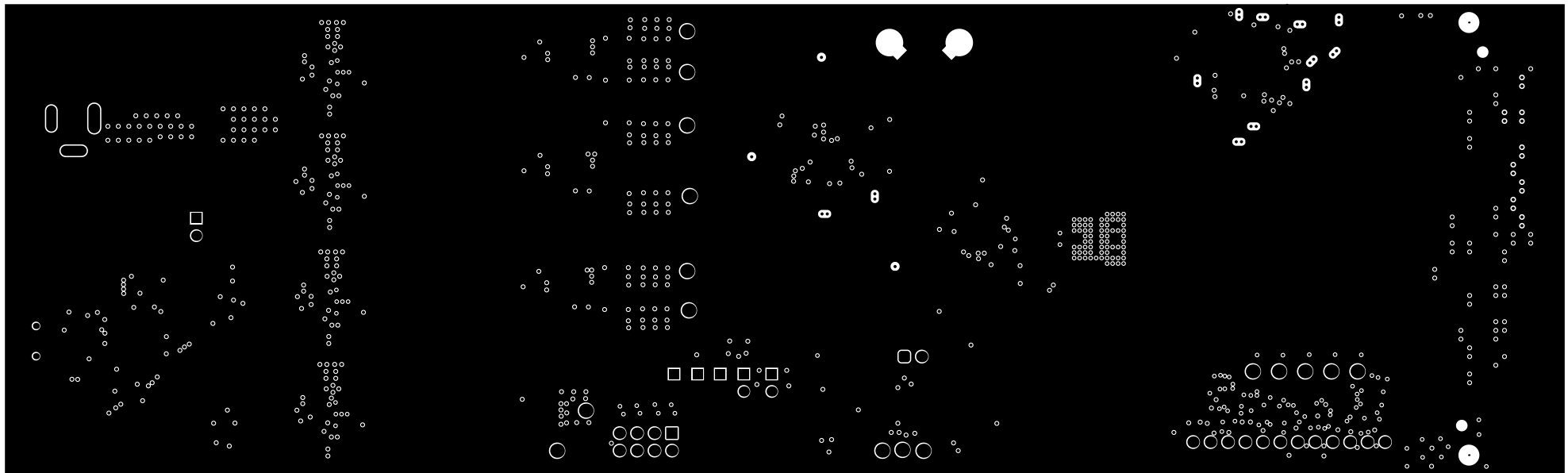


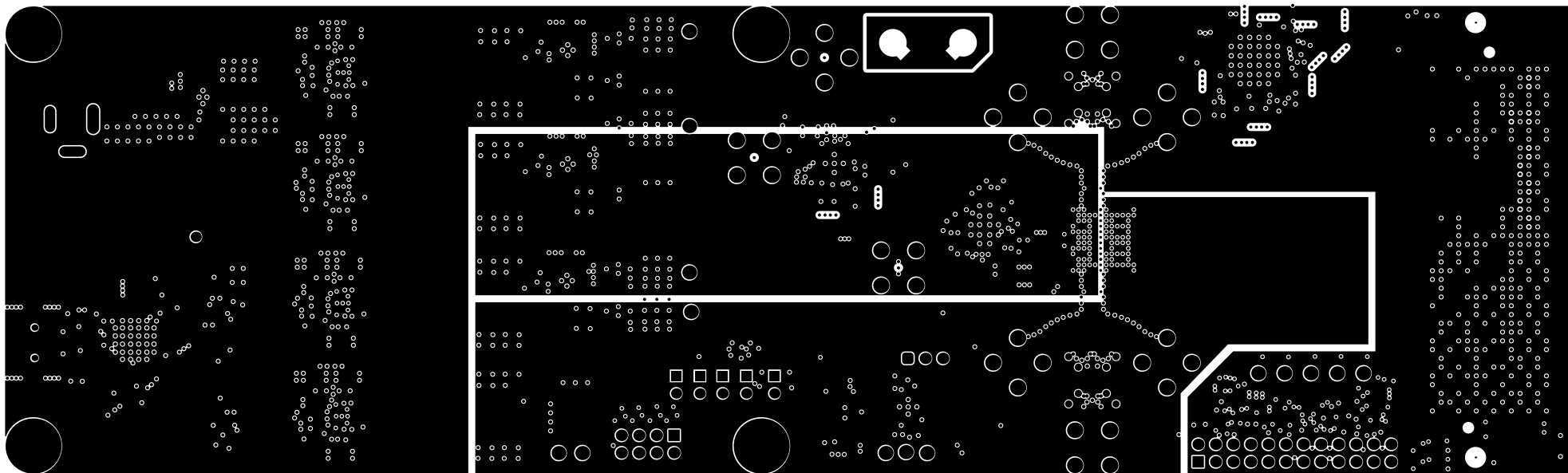
ALL ARTWORK VIEWED FROM TOP SIDE	BOARD #: DC061	REV: B	SUN REV: Not In VersionControl
LAYER NAME = Top Copper			
PLOT NAME = Top Copper	GENERATED : 6/11/2019 3:55:48 PM	TEXAS INSTRUMENTS	

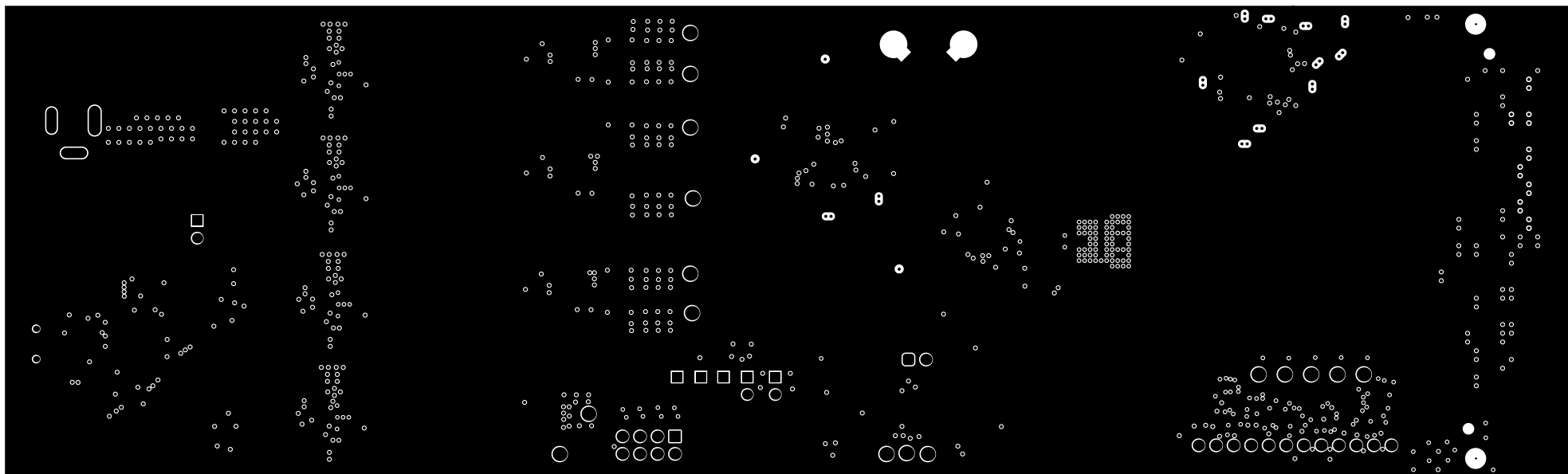


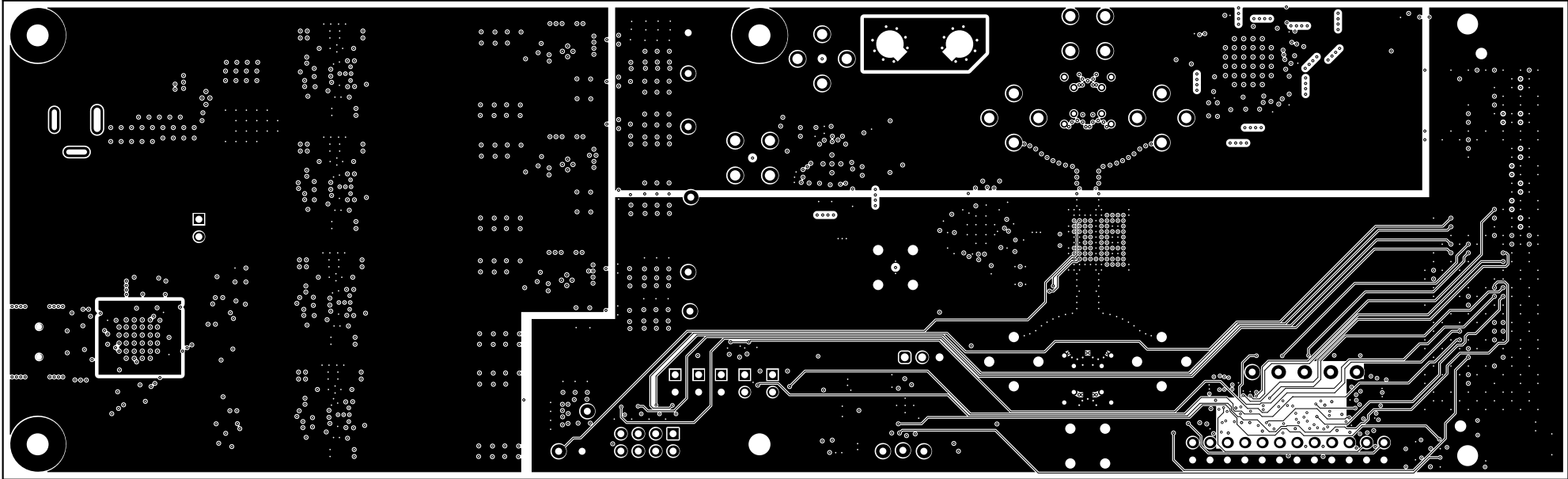
ALL ARTWORK VIEWED FROM TOP SIDE	BOARD #: DC061	REV: B	SUN REV: Not In VersionControl
LAYER NAME = Layer 2 (GND1)			
PLOT NAME = Copper Layer 2	GENERATED : 6/11/2019 3:55:49 PM	TEXAS INSTRUMENTS	



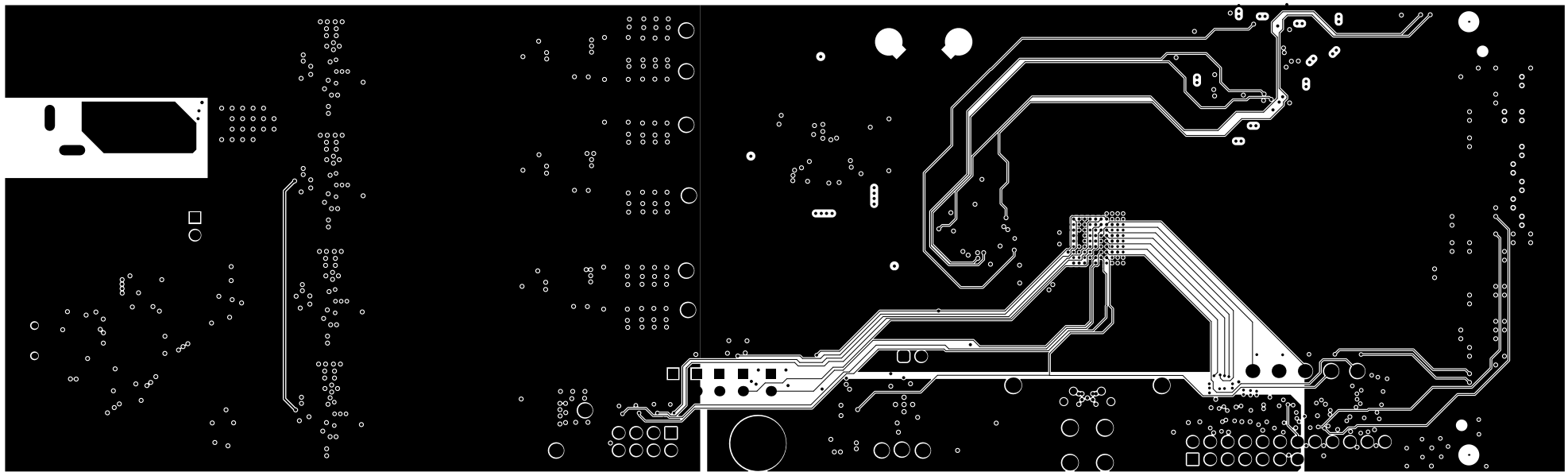


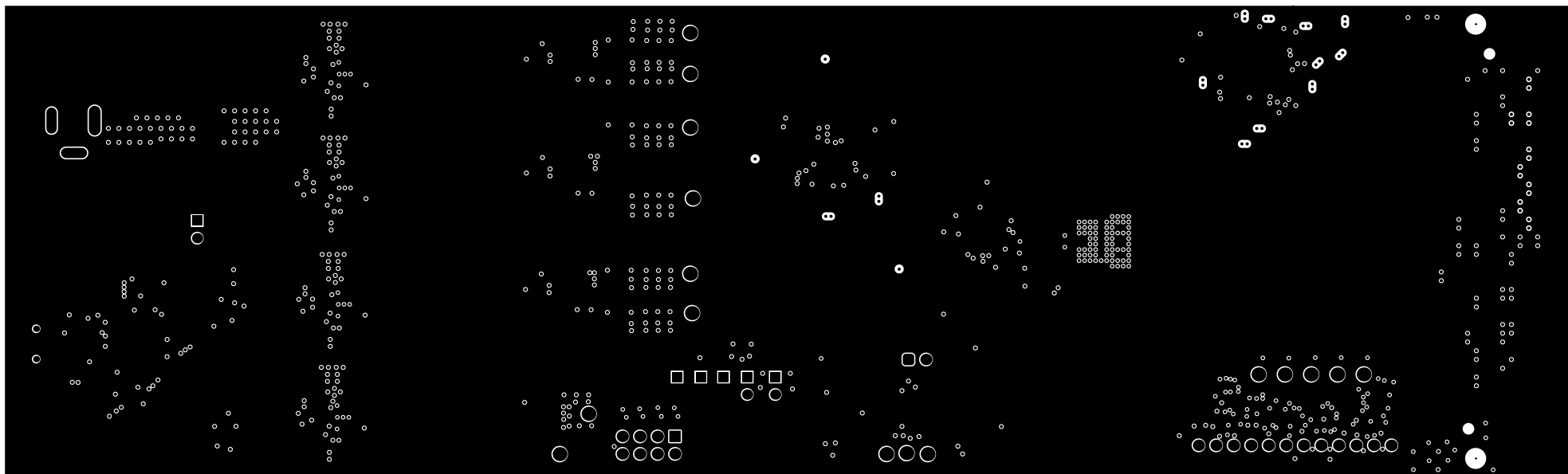


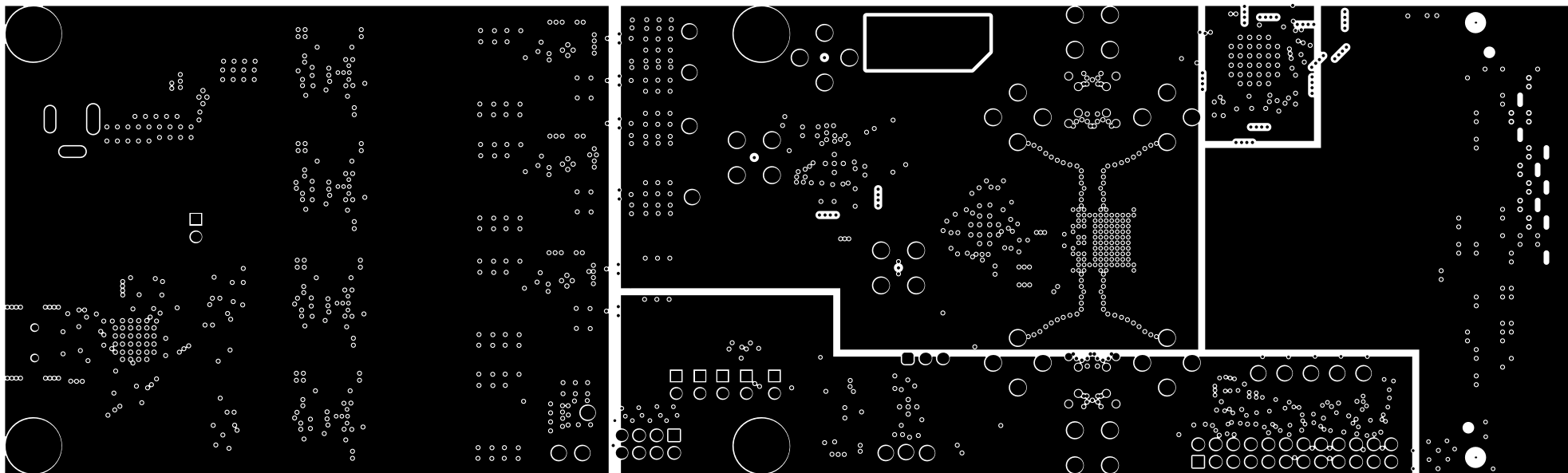


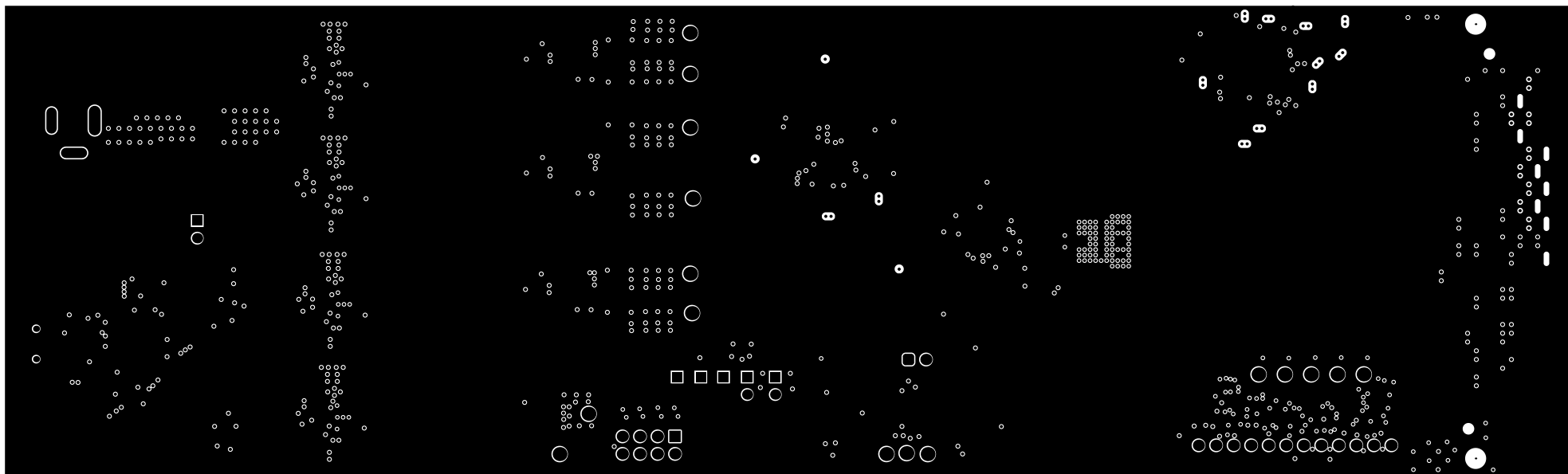


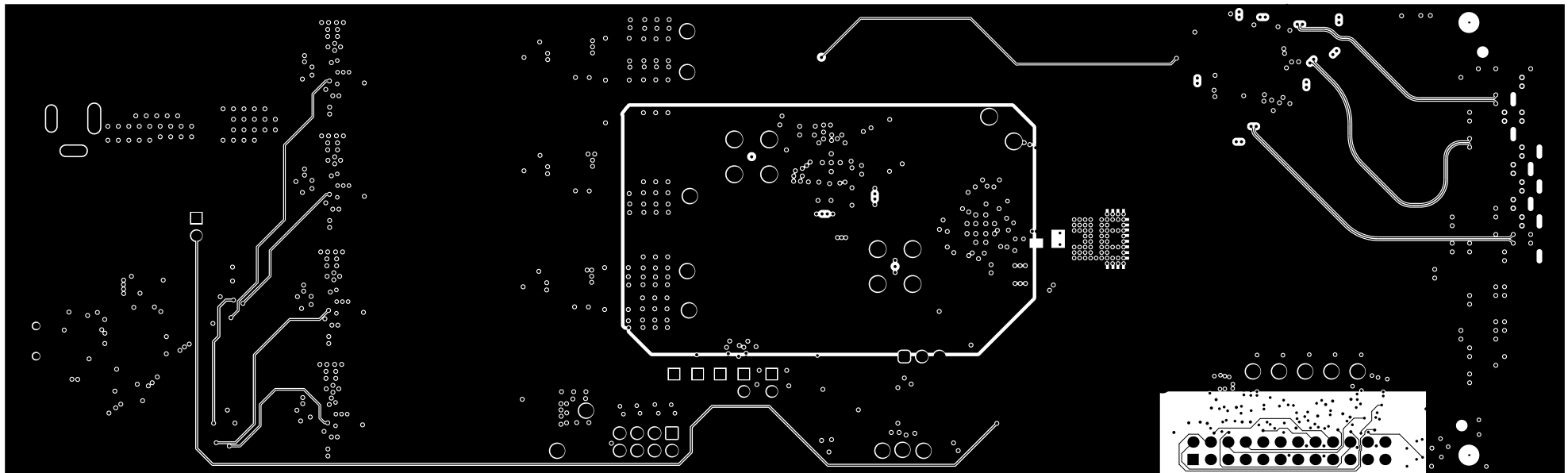
ALL ARTWORK VIEWED FROM TOP SIDE	BOARD #: DC061	REV: B	SUN REV: Not In VersionControl
LAYER NAME = Layer 7 (PWR/SIGNAL2)			
PLOT NAME = Copper Layer 7	GENERATED : 6/11/2019 3:55:49 PM	TEXAS INSTRUMENTS	



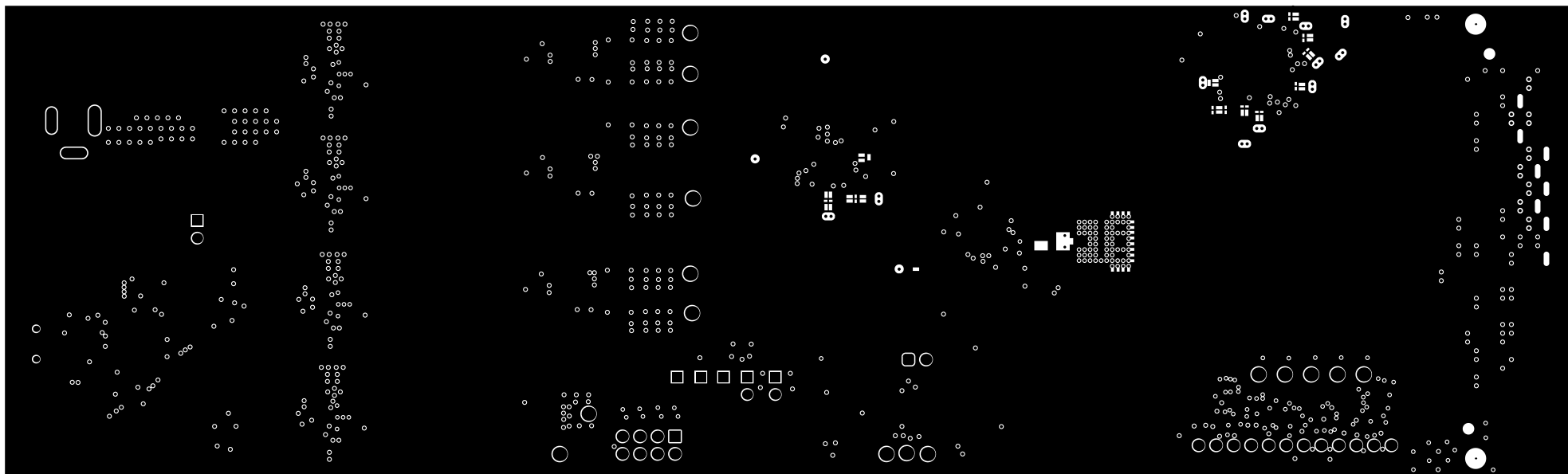


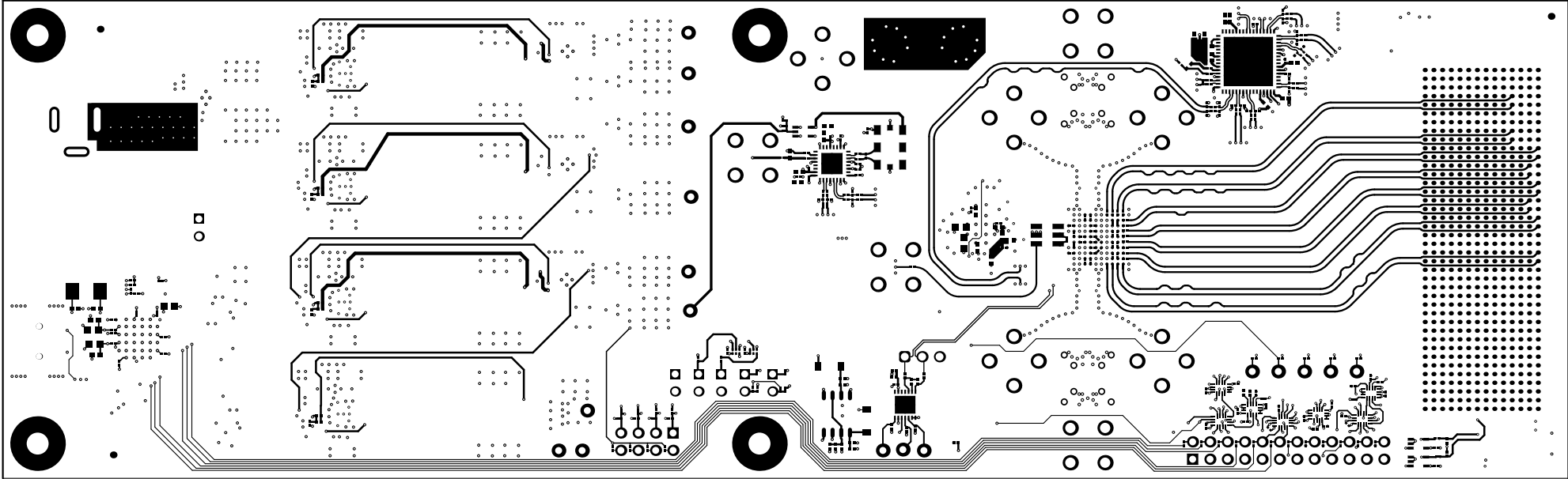




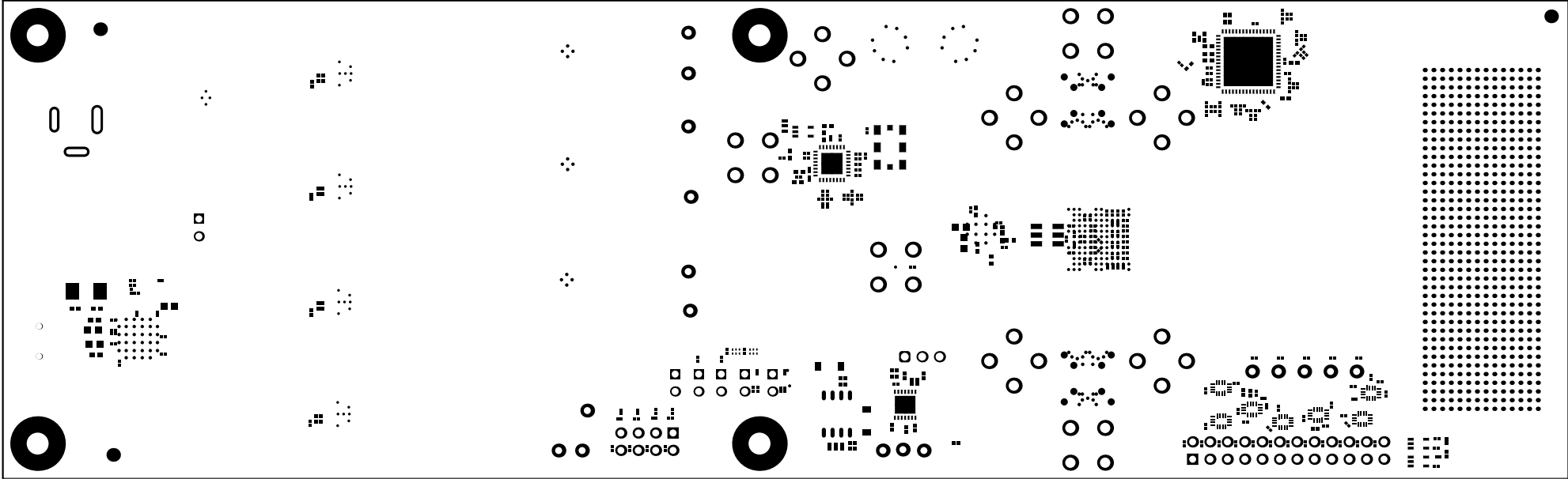


Layer 12 (SIG4)





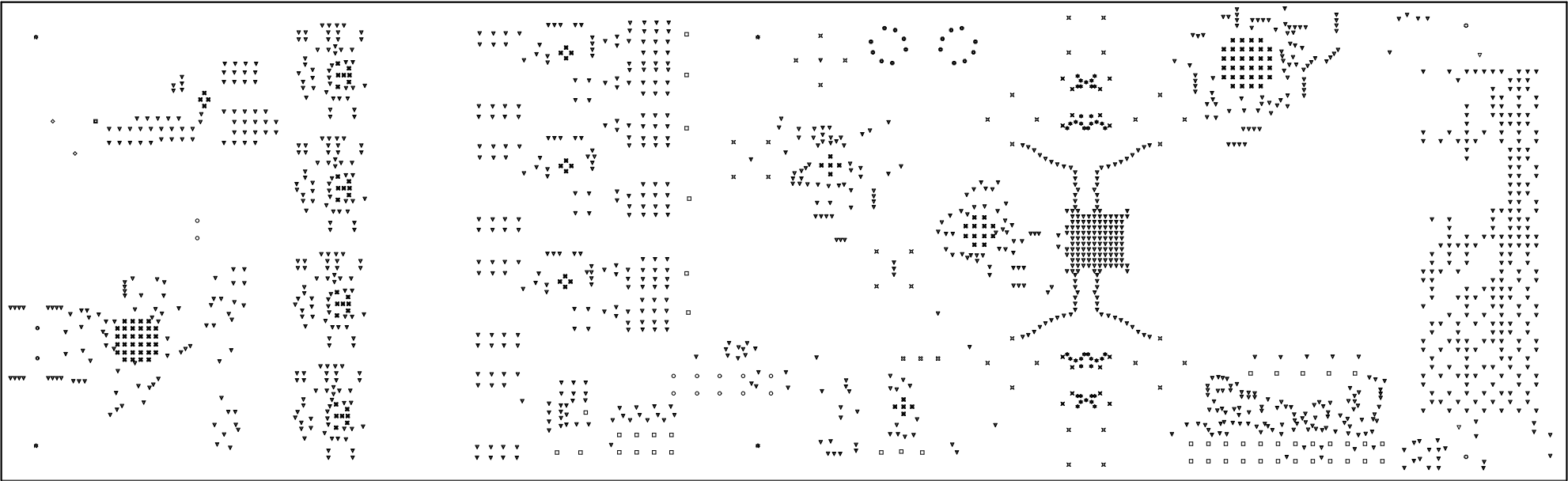
ALL ARTWORK VIEWED FROM TOP SIDE	BOARD #: DC061	REV: B	SUN REV: Not In VersionControl
LAYER NAME = Bottom Copper			
PLOT NAME = Bottom Copper	GENERATED : 6/11/2019 3:55:50 PM	TEXAS INSTRUMENTS	



ALL ARTWORK VIEWED FROM TOP SIDE	BOARD #: DC061	REV: B	SUN REV: Not In VersionControl
LAYER NAME = Bottom Solder Mask			
PLOT NAME = Bottom SolderMask	GENERATED : 6/11/2019 3:55:50 PM	TEXAS INSTRUMENTS	

Symbol	Hit Count	Finished Hole Size	Plated	Hole Type	Physical Length	Rout Path Length
⊞	1	39.76mil (1.010mm)	PTH	Slot	140.16mil (3.560mm)	100.39mil (2.550mm)
◇	2	29.92mil (0.760mm)	PTH	Slot	120.08mil (3.050mm)	90.16mil (2.290mm)
◎	2	35.43mil (0.900mm)	NPTH	Round	-	-
▽	2	50.00mil (1.270mm)	NPTH	Round	-	-
⊞	2	106.00mil (2.692mm)	NPTH	Round	-	-
⊞	3	45.28mil (1.150mm)	PTH	Round	-	-
A	4	125.98mil (3.200mm)	NPTH	Round	-	-
☆	4	125.98mil (3.200mm)	PTH	Round	-	-
○	12	40.16mil (1.020mm)	PTH	Round	-	-
⊞	16	15.75mil (0.400mm)	PTH	Round	-	-
⊞	16	25.00mil (0.635mm)	PTH	Round	-	-
⊞	36	59.06mil (1.500mm)	PTH	Round	-	-
☆	42	10.00mil (0.254mm)	PTH	Round	-	-
□	49	40.00mil (1.016mm)	PTH	Round	-	-
⊞	130	7.87mil (0.200mm)	PTH	Round	-	-
▽	1394	8.00mil (0.203mm)	PTH	Round	-	-
	1715 Total					

Slot definitions : Rout Path Length = Calculated from tool start centre position to tool end centre position.
Physical Length = Rout Path Length + Tool Size = Slot length as defined in the PCB layout



ALL ARTWORK VIEWED FROM TOP SIDE	BOARD #: DC061	REV: B	SUN REV: Not In VersionControl
LAYER NAME = Drill Drawing			
PLOT NAME = Drill Drawing	GENERATED : 6/11/2019 3:55:50 PM	TEXAS INSTRUMENTS	



ALL ARTWORK VIEWED FROM TOP SIDE	BOARD #: DC061	REV: B	SUN REV: Not In VersionControl
LAYER NAME =	M2 Board Dimensions		
PLOT NAME = Board Dimensions	GENERATED : 6/11/2019 3:55:54 PM	TEXAS INSTRUMENTS	